

El Paso County

Sheriff's

Office



Mission

The mission of the El Paso County Sheriff's Office is to provide public safety services to our community by fulfilling the duties and responsibilities as defined by Colorado law with a determination to meet the growing expectations of our citizens.

Vision

Our vision is to ensure the future quality of life for our citizens as our community grows. We will set the standard in public safety through innovation, flexibility, and commitment while recruiting and retaining a dynamic work force. Through community support and fiscal responsibility we will strategically plan and prepare for the necessary resources to meet future needs in Law Enforcement, Detentions, Wildland Fire, Search and Rescue, and Civil Process.

Core Values

- We believe....
 1. In protecting the constitutional rights of all individuals.
 2. Our Civilian and Sworn employees are our greatest asset and the key to our collective success.
 3. We work for and with the citizens of our community in a partnership based on mutual trust.
 4. In identifying, prioritizing, preventing and solving community problems.
 5. In supporting on-going organizational change that strengthens our ability and capacity to serve our community.
 6. All our actions and decisions are driven by a commitment to Honesty, Loyalty and Unity.

Motto

Commitment to Excellence:
Honesty, Loyalty, Unity

Identifying and understanding the organizational structure of the Sheriff's Office (P&P 102)

- Employees are classified into two (2) groups:
 - Sworn
 - Non-Sworn (Civilian)
- Both are critical components of the team

Sworn

- Those personnel who possess a Deputy Sheriff commission are designated by the following ranks:
 - Undersheriff (sworn by state statute)
 - Chief
 - Commander
 - Lieutenant
 - Sergeant
 - Deputy I, II, or III

Civilian

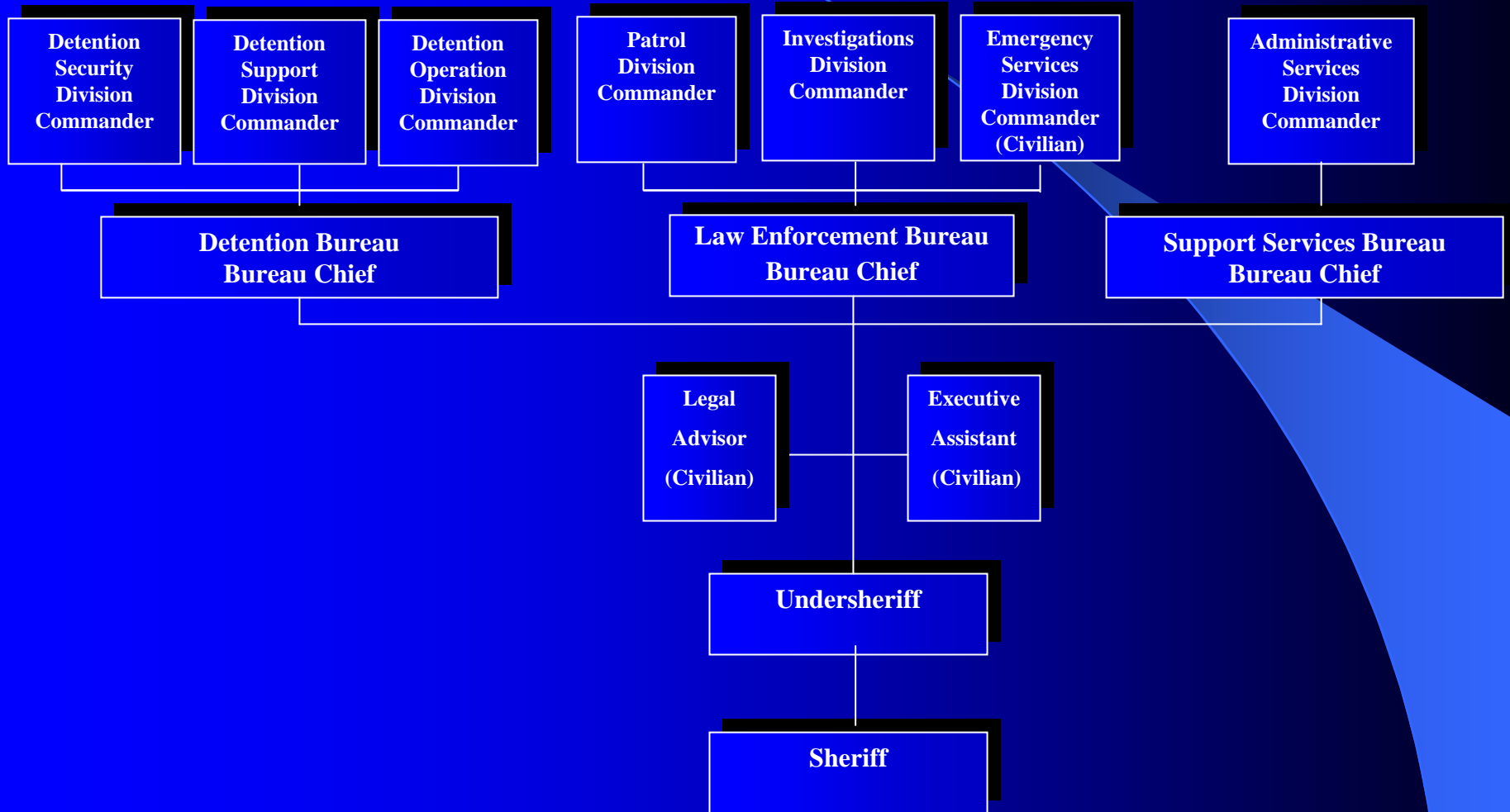
- Those personnel who are non-commissioned employees and are not designated by one of the previous ranks
- Civilian levels are recognized by Grade and may supervise at all levels

***The Sheriff's Office
Consists of Seven
Organizational Components***

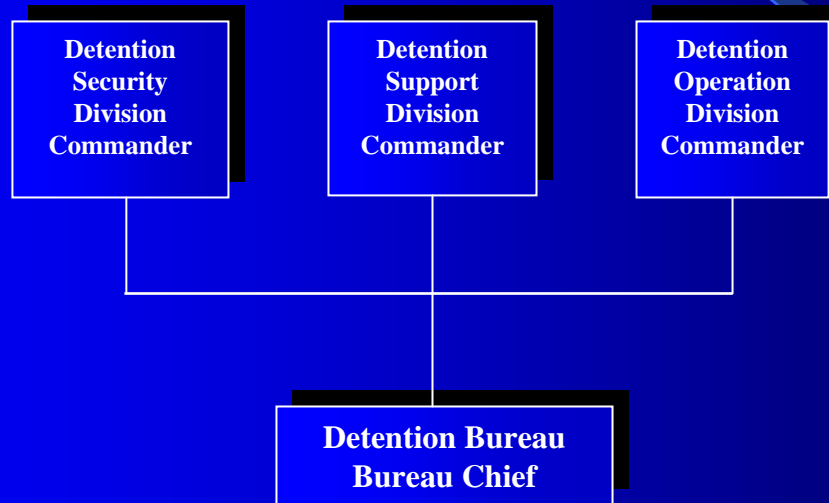
- **1. Office** – all personnel and functional areas and components are directly or indirectly the responsibility of the Sheriff
 - Command Group consists of the Sheriff, Undersheriff, both are supported by an Executive Assistant
 - We are an Office (elected), not a Department (appointed)
- **2. Bureau** – major component of the office structure comprised of various divisions, supervised by a Bureau Chief. There are 3 bureaus in the Office.
- **3. Division** – major component of a bureau responsible for a functional area, supervised by a Commander

- **4. Section** – subordinate to a Division, responsible for a functional area, supervised by lieutenant or civilian equivalent
- **5. Unit** – functional area or group limited to a specific task or responsibility, supervised by a sergeant or civilian equivalent (normally)
- **6. Shift** – person or group of people assigned to a certain task during a specific time, supervised by a sergeant (normally)
- **7. Team** – group of people organized to perform a task, may be permanent or temporary; can be supervised at any level depending on the task

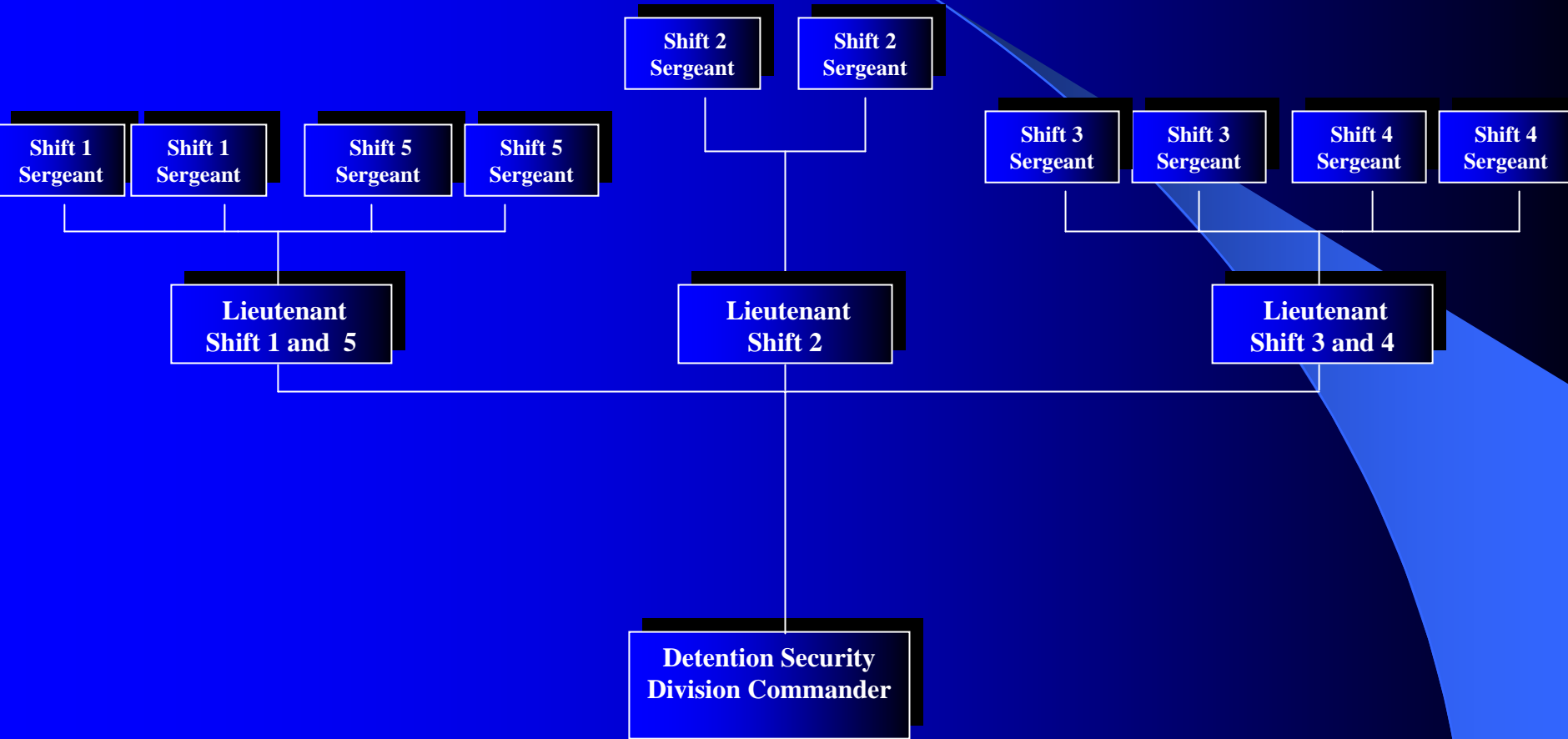
El Paso County Sheriff's Office Staff



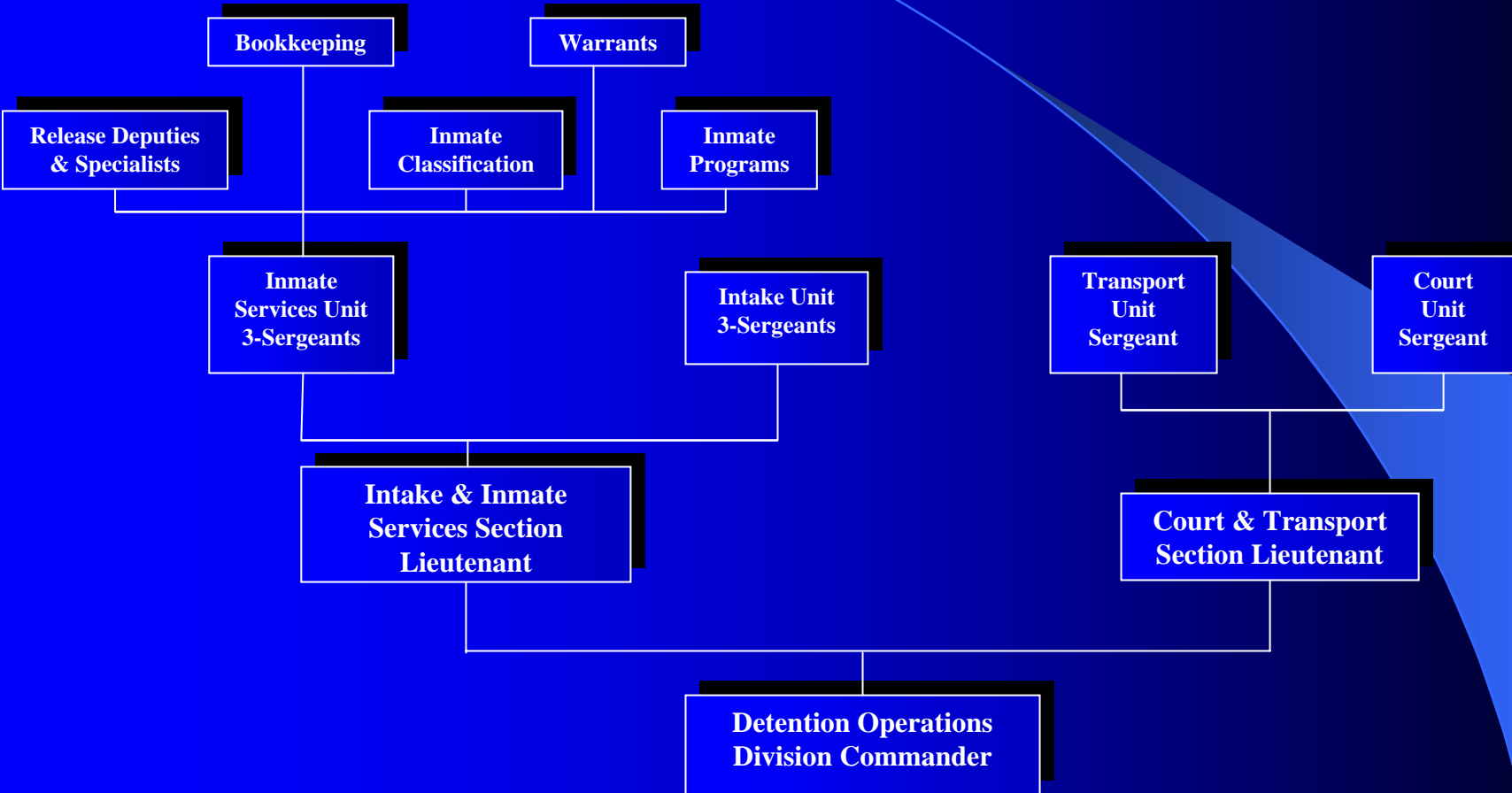
Detention Bureau



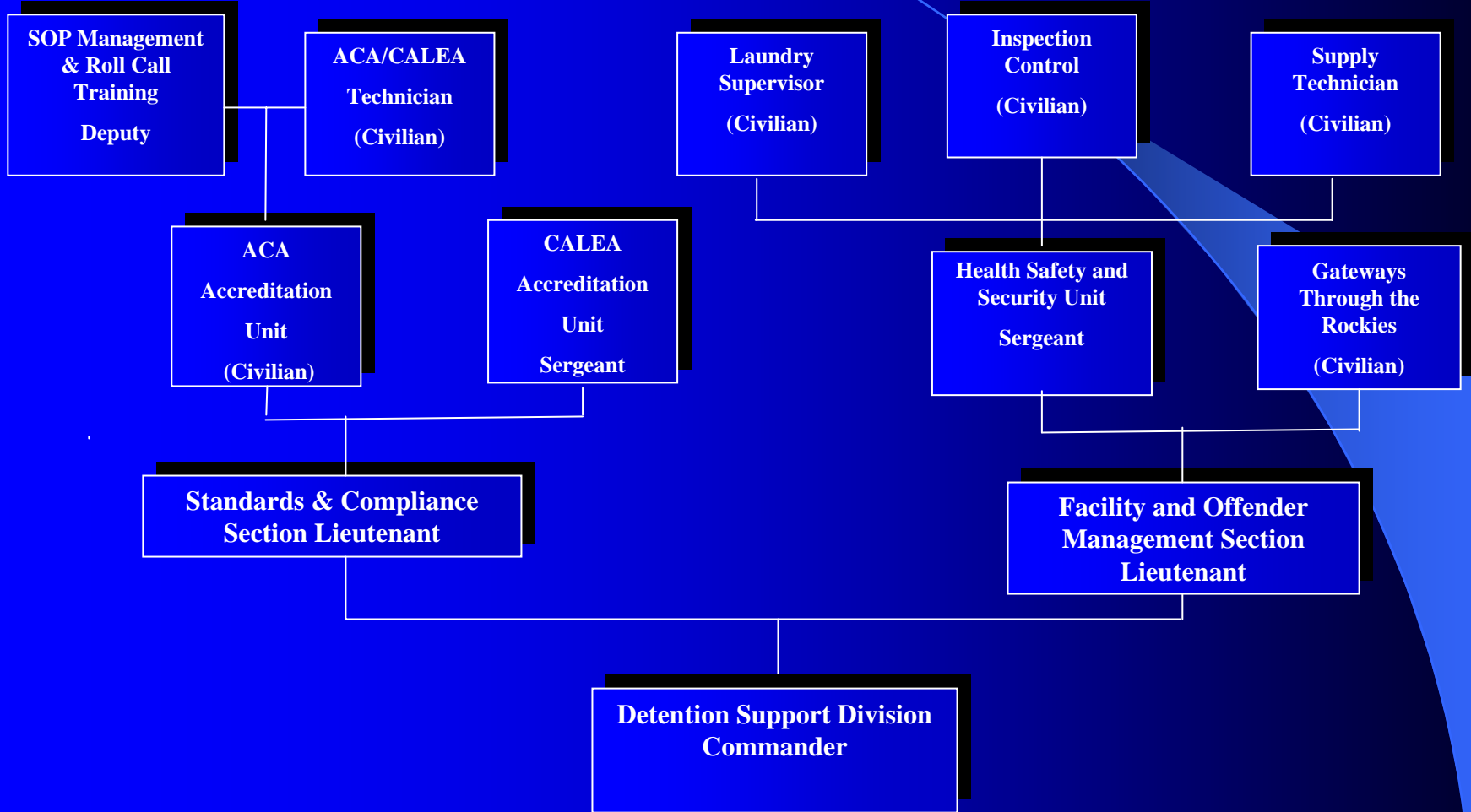
Detention Security Division



Detention Operations Division



Detention Support Division



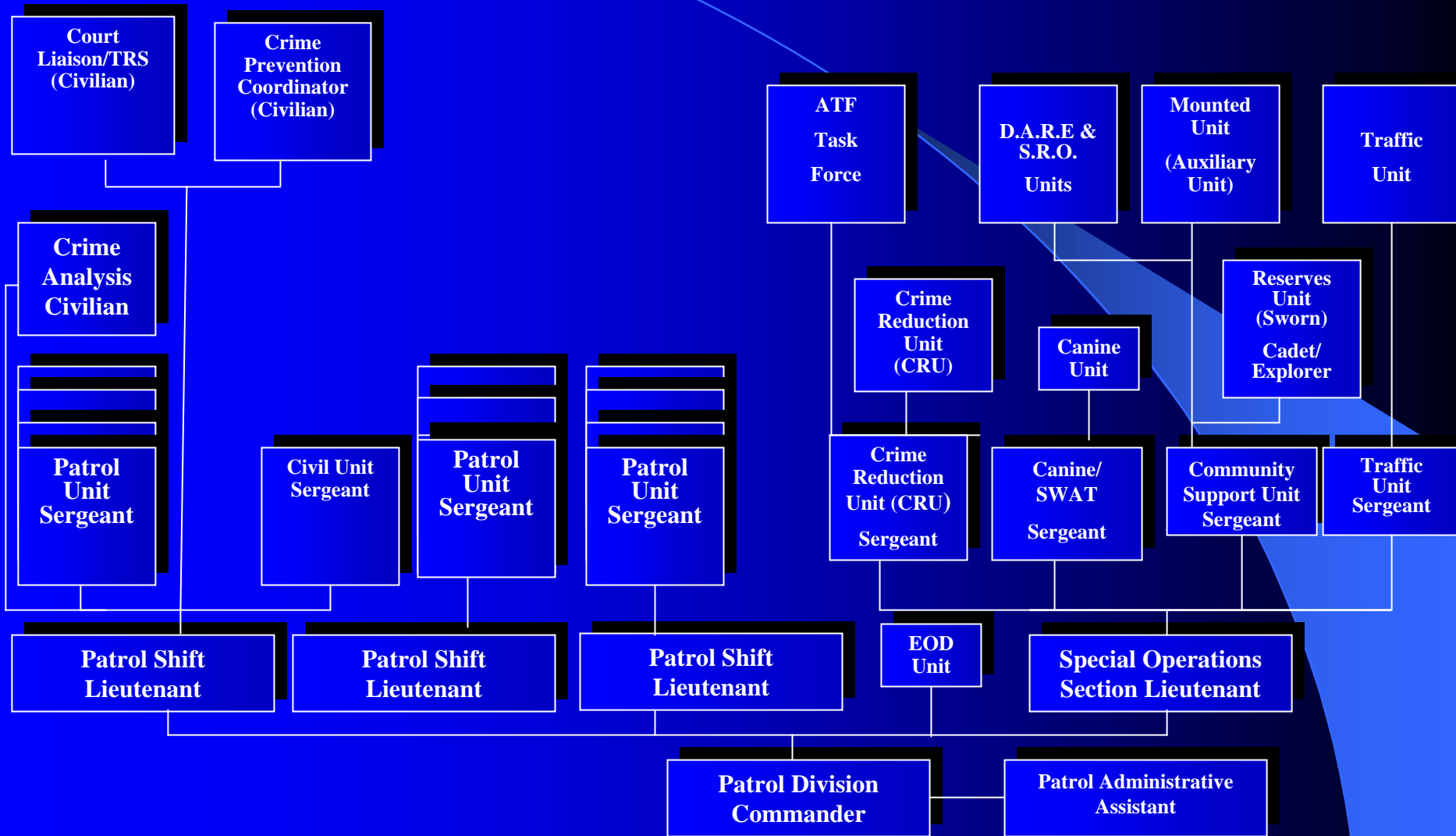
Special Response Team (S.R.T.) Team (when activated)



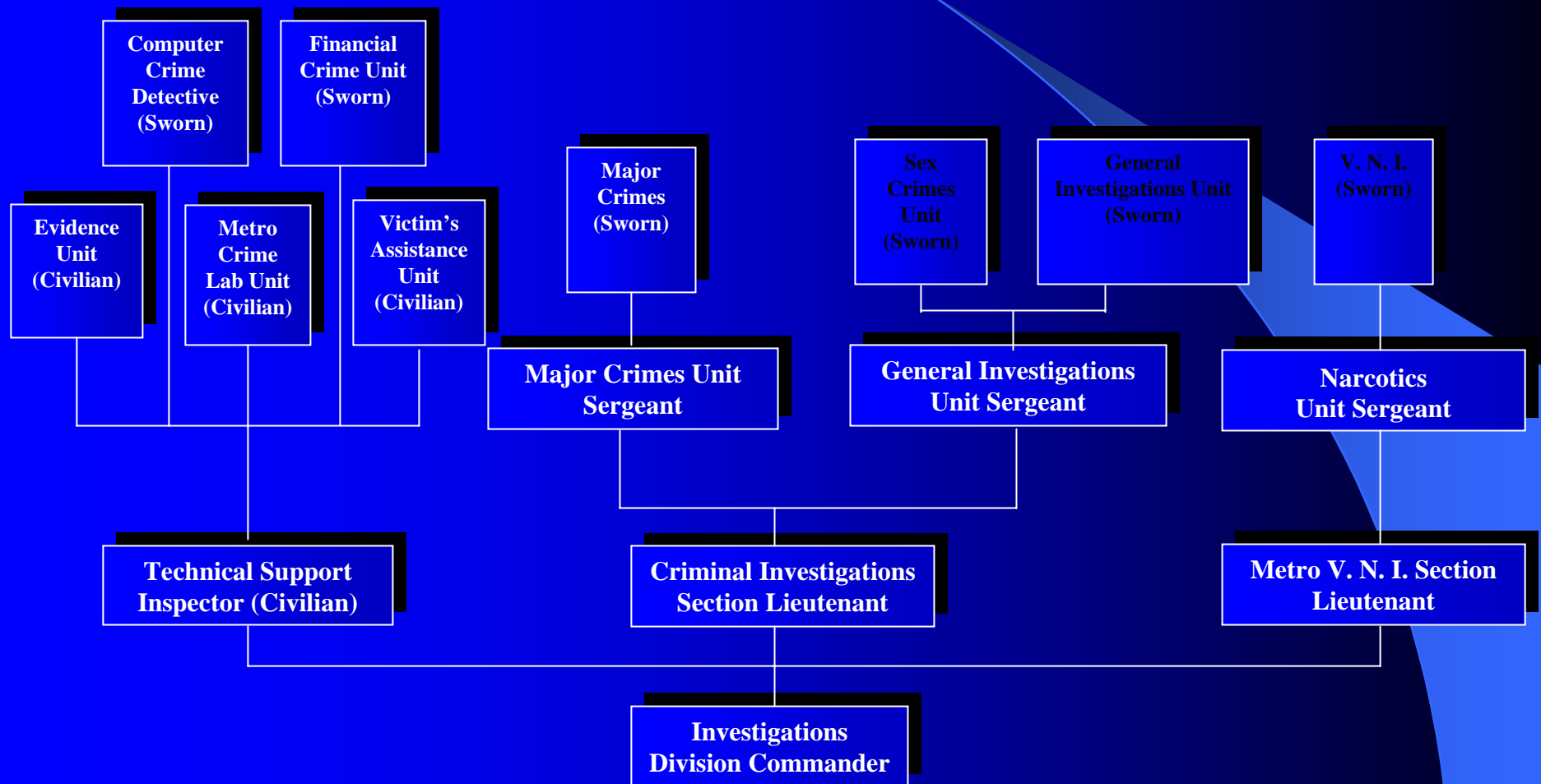
Law Enforcement Bureau



Patrol Division

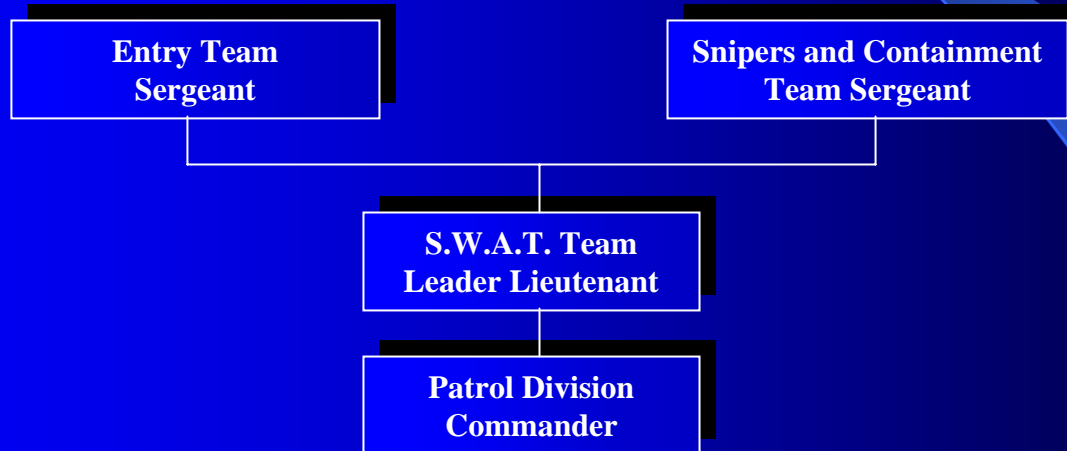


Investigations Division

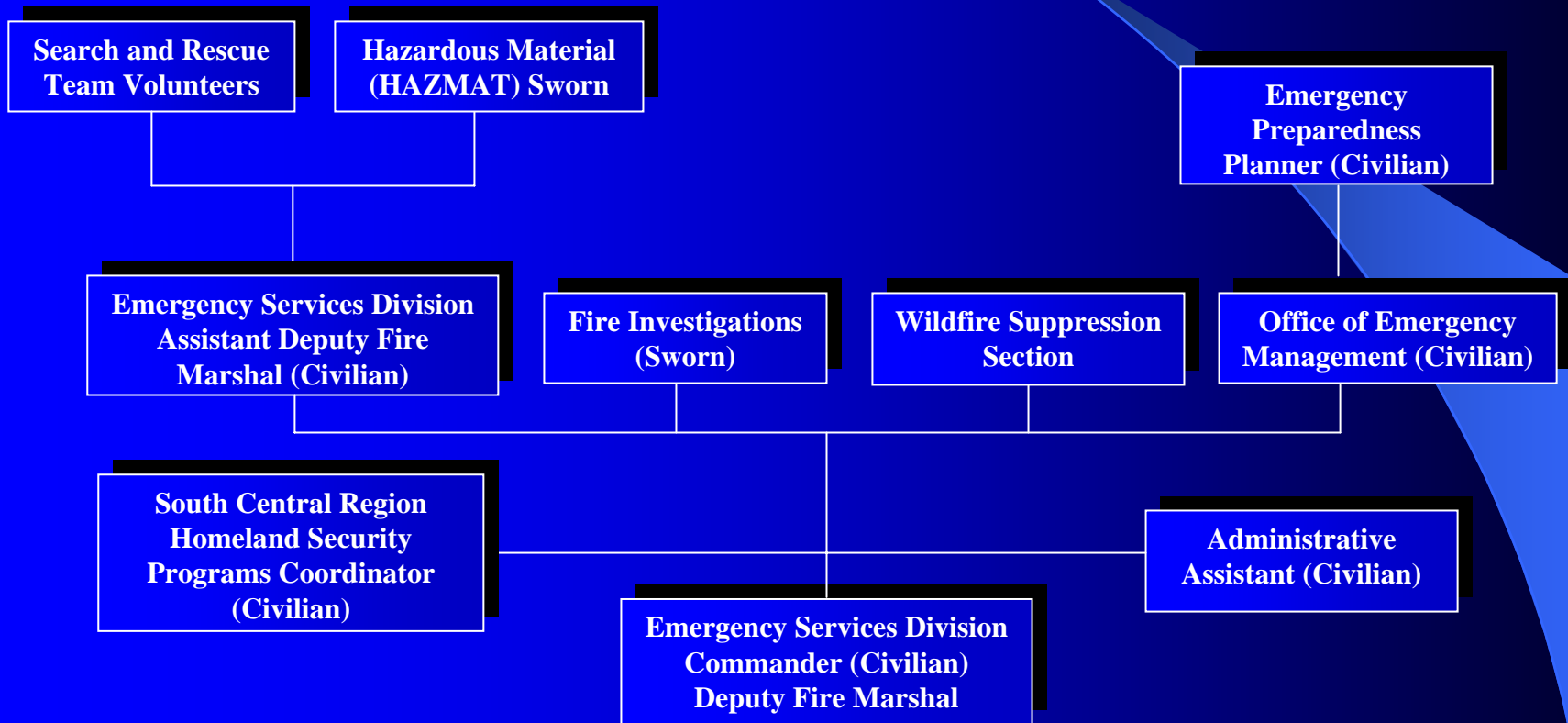


Special Weapons and Tactics (S.W.A.T.) Team

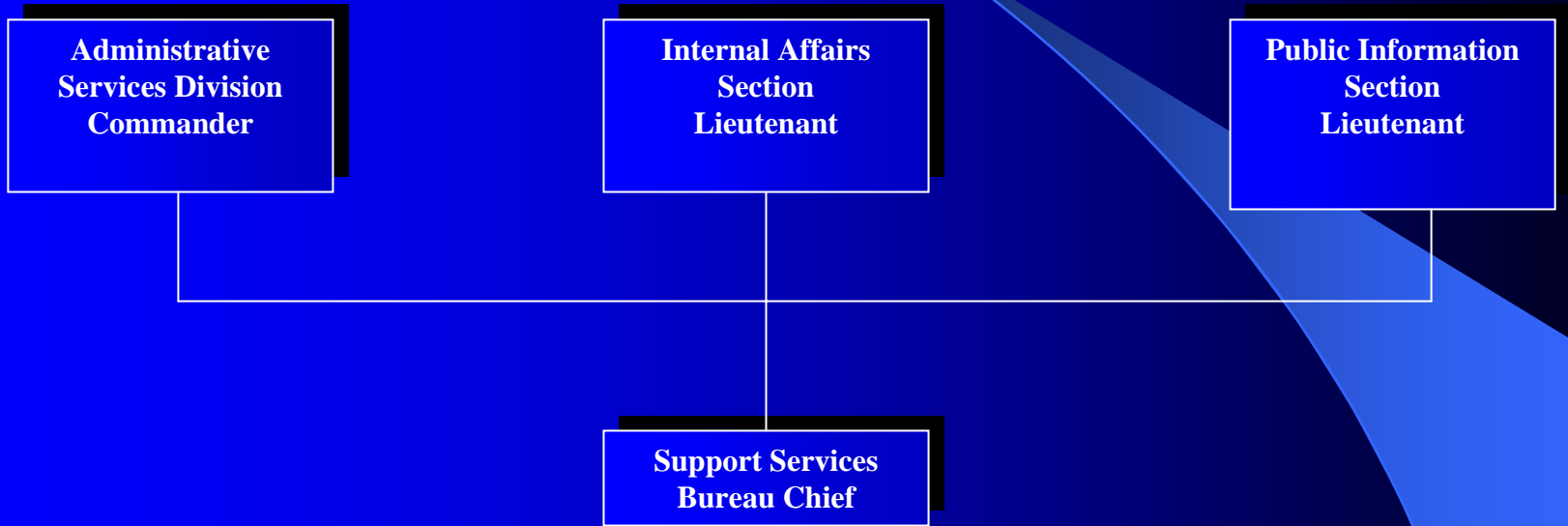
(when activated)



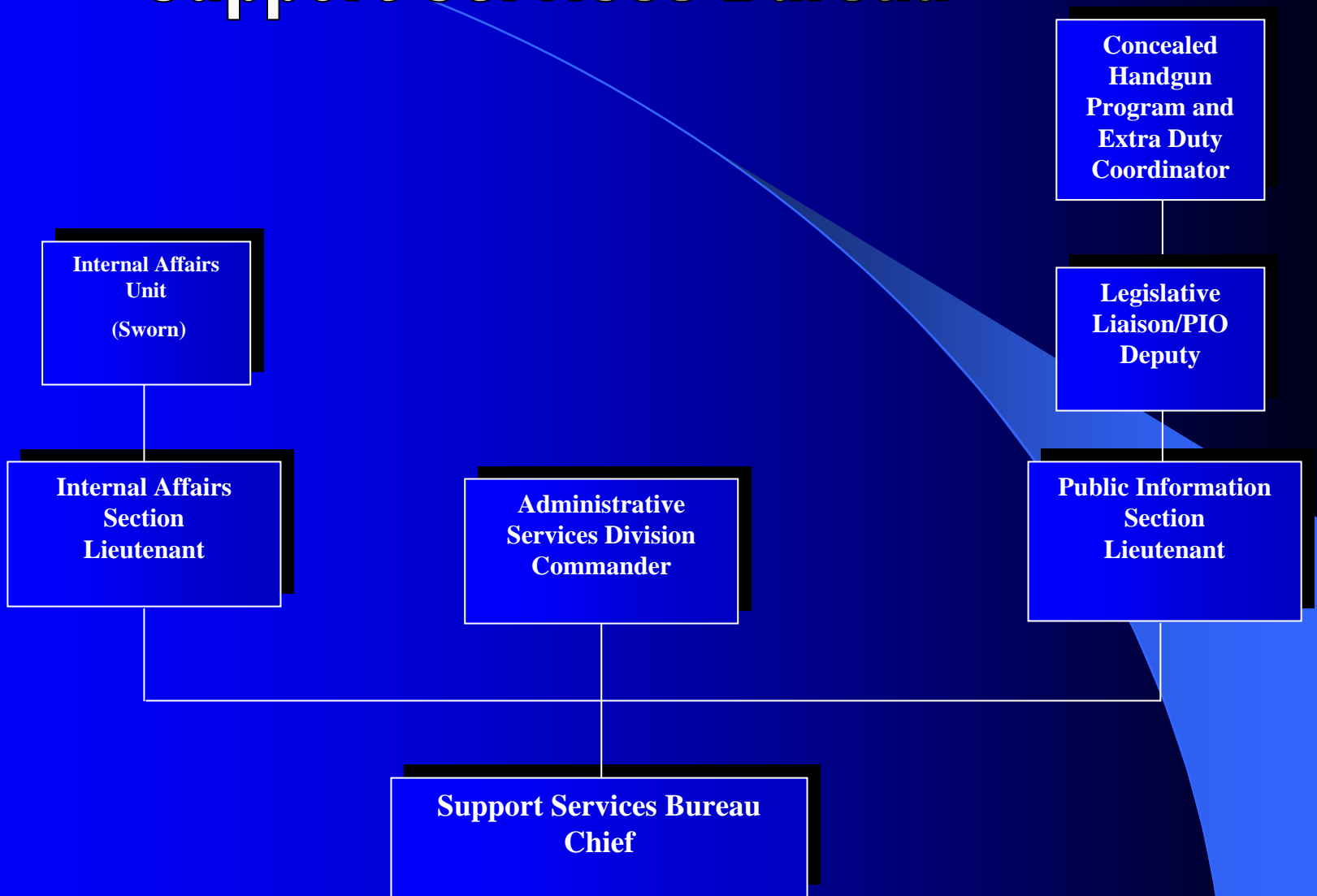
Emergency Services Division



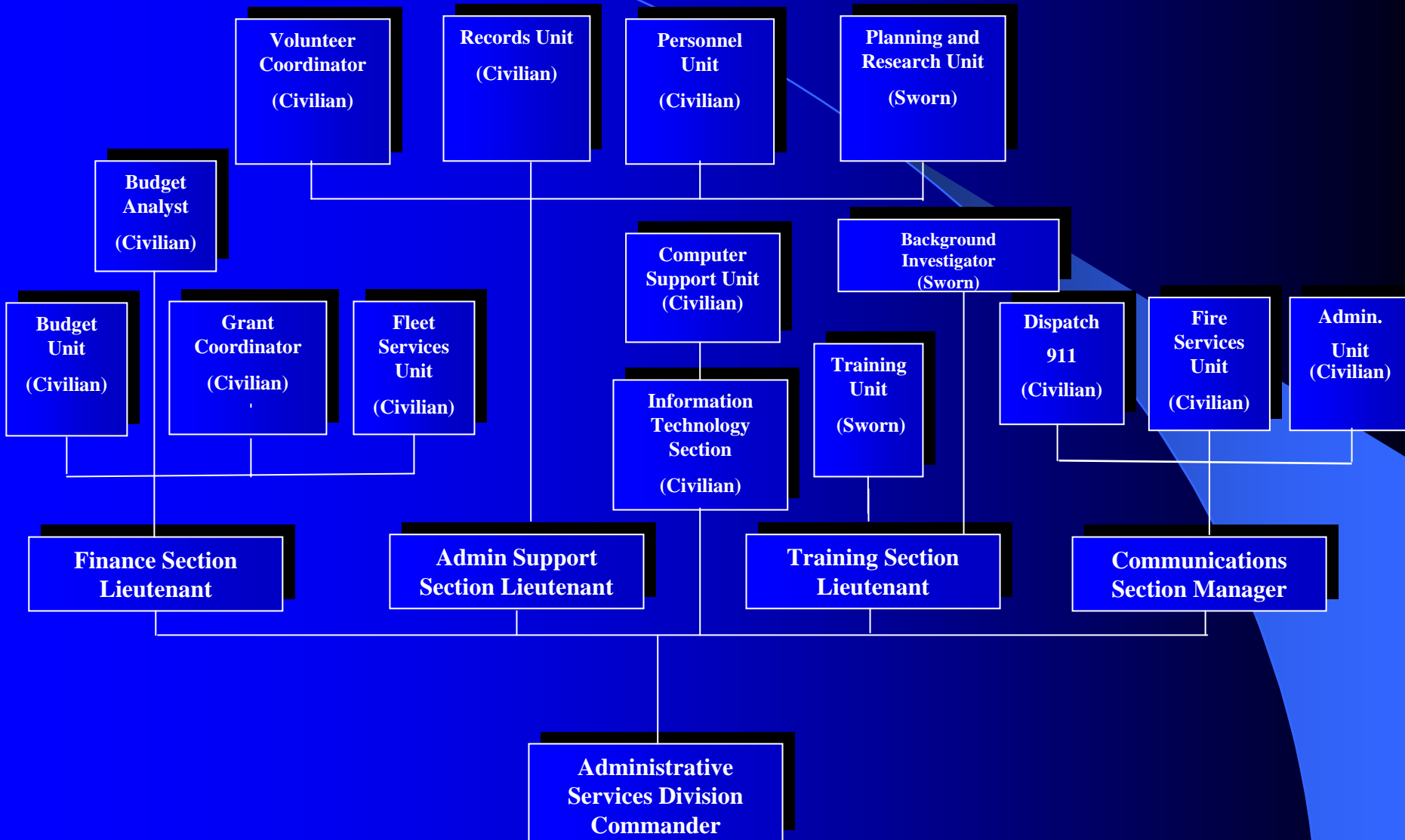
Support Services Bureau



Support Services Bureau



Administrative Services Division



Questions

